

PRINCIPAL PARTICULARS

LOA	292'-0"
LBP - LWL	280'-0"
BEAM	64'-0"
DEPTH	24'-6"
LOADLINE DRAFT	19'-11"
DEADWEIGHT	5,393 LT
GENERATORS	(4) X 1825KW @ 1,800 RPM (WATER-COOLED), (2) X 200KW (AIR COOLED)
TOTAL KILOWATTS	7,300 KW @ 690 VAC
MAIN PROPULSION	(2) X 2,500KW @ 620 VAC @ 1,000 RPM (6,700HP TOTAL) FIXED PITCH VFD Z-DRIVE IN NOZZLES
BOW THRUSTERS	(2) X 1,180 KW @ 620 VAC @ 1,200 RPM (3,160HP TOTAL) FIXED PITCH VFD/REVERSING MOTORS
FIRE MONITORS	(2) X 5284 GPM/ (495KW @ 690 VAC) 665HP/394' REACH - REMOTE CONTROLLED FIRE MONITORS
REGULATORY	USCG SUB I & L /SOLAS/ABS ✘ A1, OFFSHORE SERVICE VESSEL, ✘ AMS, DPS-2, ENVIRO, GP

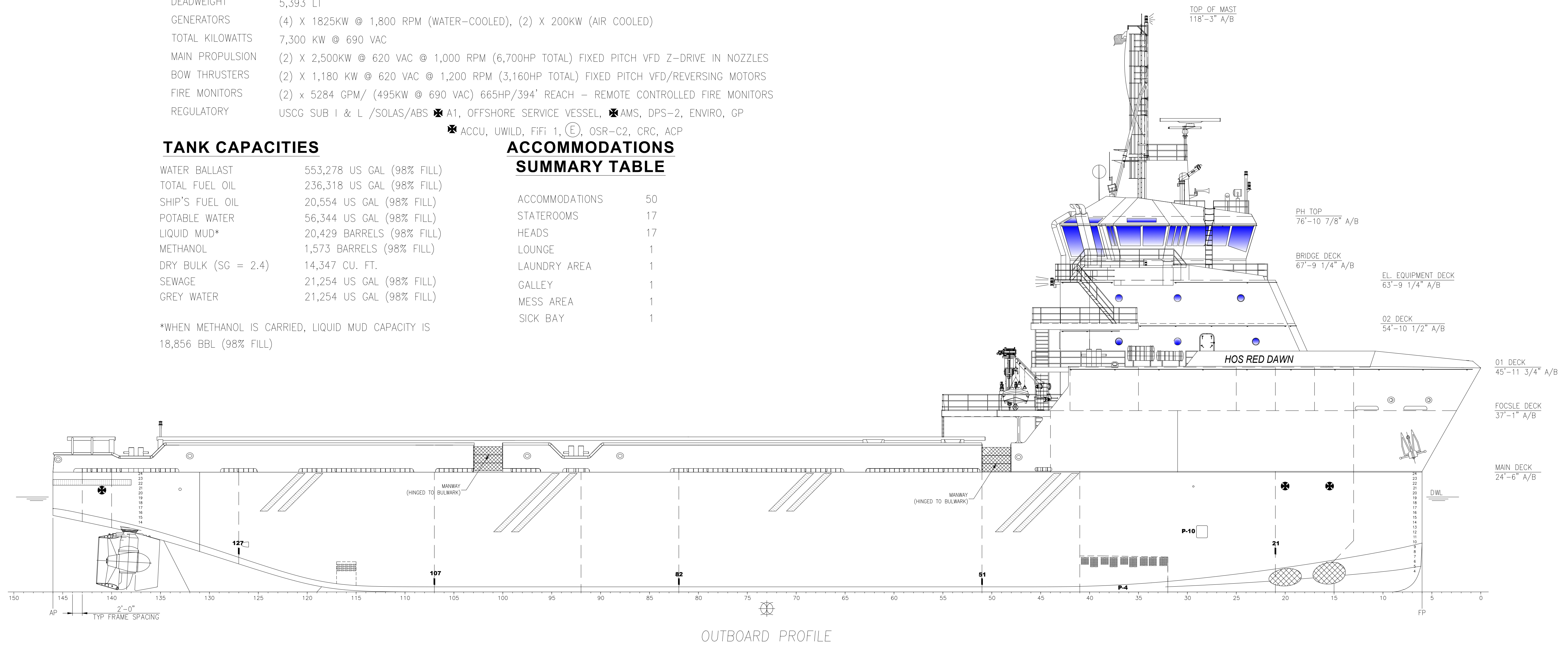
TANK CAPACITIES

WATER BALLAST	553,278 US GAL (98% FILL)
TOTAL FUEL OIL	236,318 US GAL (98% FILL)
SHIP'S FUEL OIL	20,554 US GAL (98% FILL)
POTABLE WATER	56,344 US GAL (98% FILL)
LIQUID MUD*	20,429 BARRELS (98% FILL)
METHANOL	1,573 BARRELS (98% FILL)
DRY BULK (SG = 2.4)	14,347 CU. FT.
SEWAGE	21,254 US GAL (98% FILL)
GREY WATER	21,254 US GAL (98% FILL)

*WHEN METHANOL IS CARRIED, LIQUID MUD CAPACITY IS 18,856 BBL (98% FILL)

ACCOMMODATIONS SUMMARY TABLE

ACCOMMODATIONS	50
STATEROOMS	17
HEADS	17
LOUNGE	1
LAUNDRY AREA	1
GALLEY	1
MESS AREA	1
SICK BAY	1



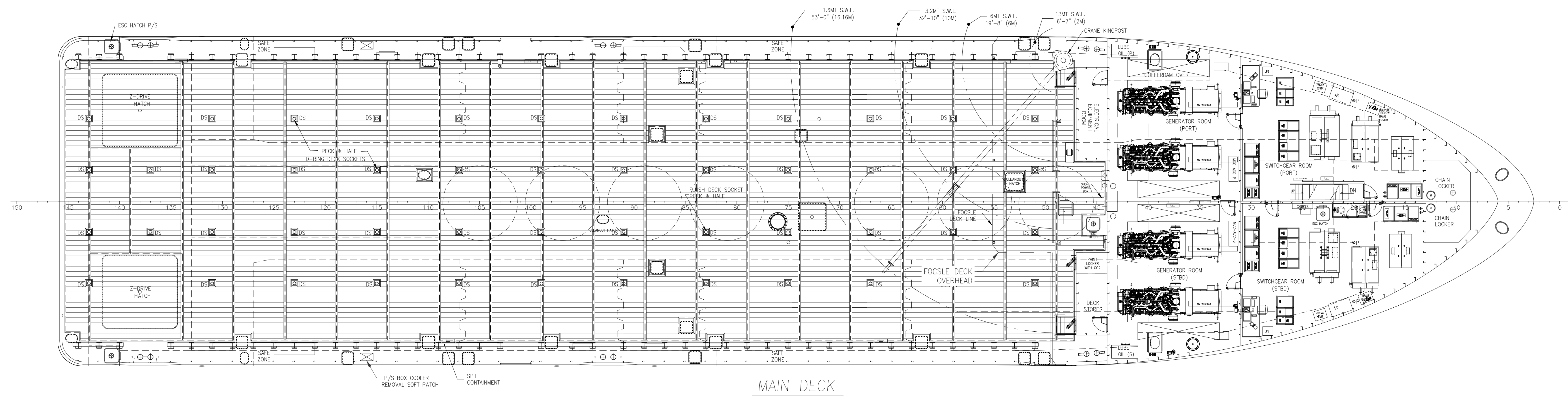
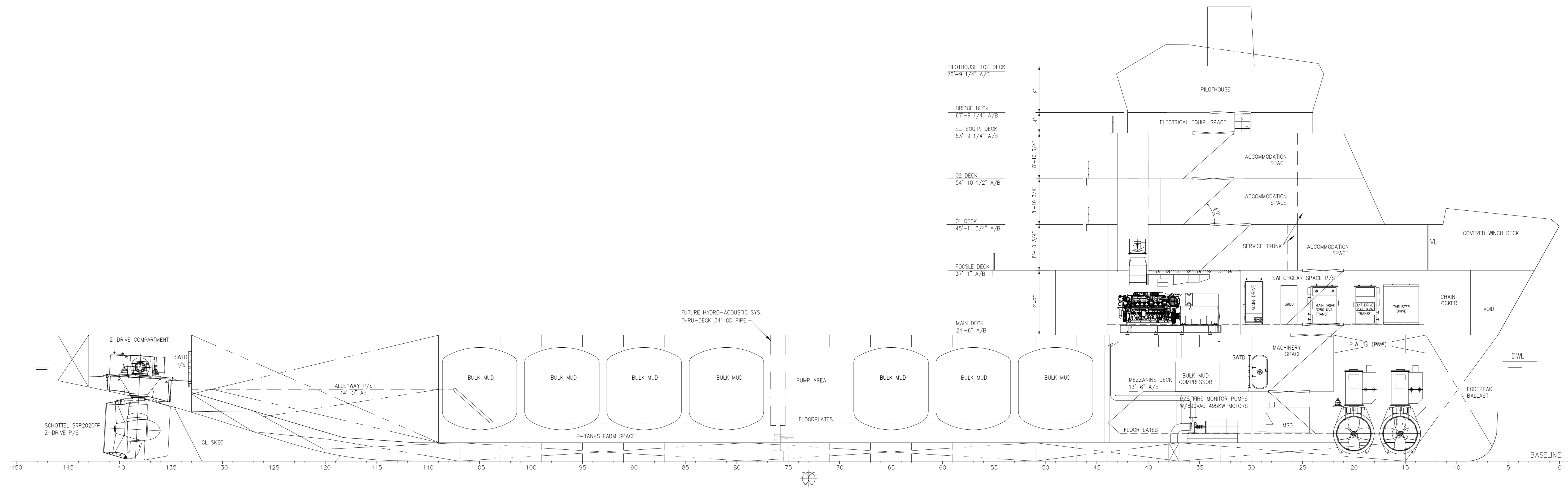
OUTBOARD PROFILE


HOSMAX 300 / HOS RED DAWN

THIS DRAWING, DESIGN CONCEPT AND SPECIFICATIONS ARE THE PROPERTY OF HORNBECK OFFSHORE SERVICES AND ARE FURNISHED ON A CONFIDENTIAL BASIS WITH AN EXPRESSED UNDERSTANDING THAT THEY WILL NOT BE COPIED, IN ANY MANNER USED FOR MANUFACTURE, SOLD, TRANSFERRED, NOR USED TO THE DETRIMENT OF HOS, FROM WITHOUT WRITTEN PERMISSION. 1008 ©

HORNBECK OFFSHORE SERVICES

DRAWN BY:	C. DE MARTINIS	292'-0" X 64'-0" X 24'-6"	SIZE D
CHECKED BY:	M. STANSBURY	OUTBOARD PROFILE & GENERAL ARRANGEMENT	REV. 5
APPROVED BY:	J. GUIDRY	TASK No. 7681 HULL No. 201	DRAWING No. 1.001 SY: ESG
LAST SAVE/PRINT: 7/9/2024 2:37 PM ENG: CHORNBEC SHEET: ANSI D 22X34		SCALE: 3/32" = 1'-0" DATE: 08/05/14 SHEET 1 OF 4	



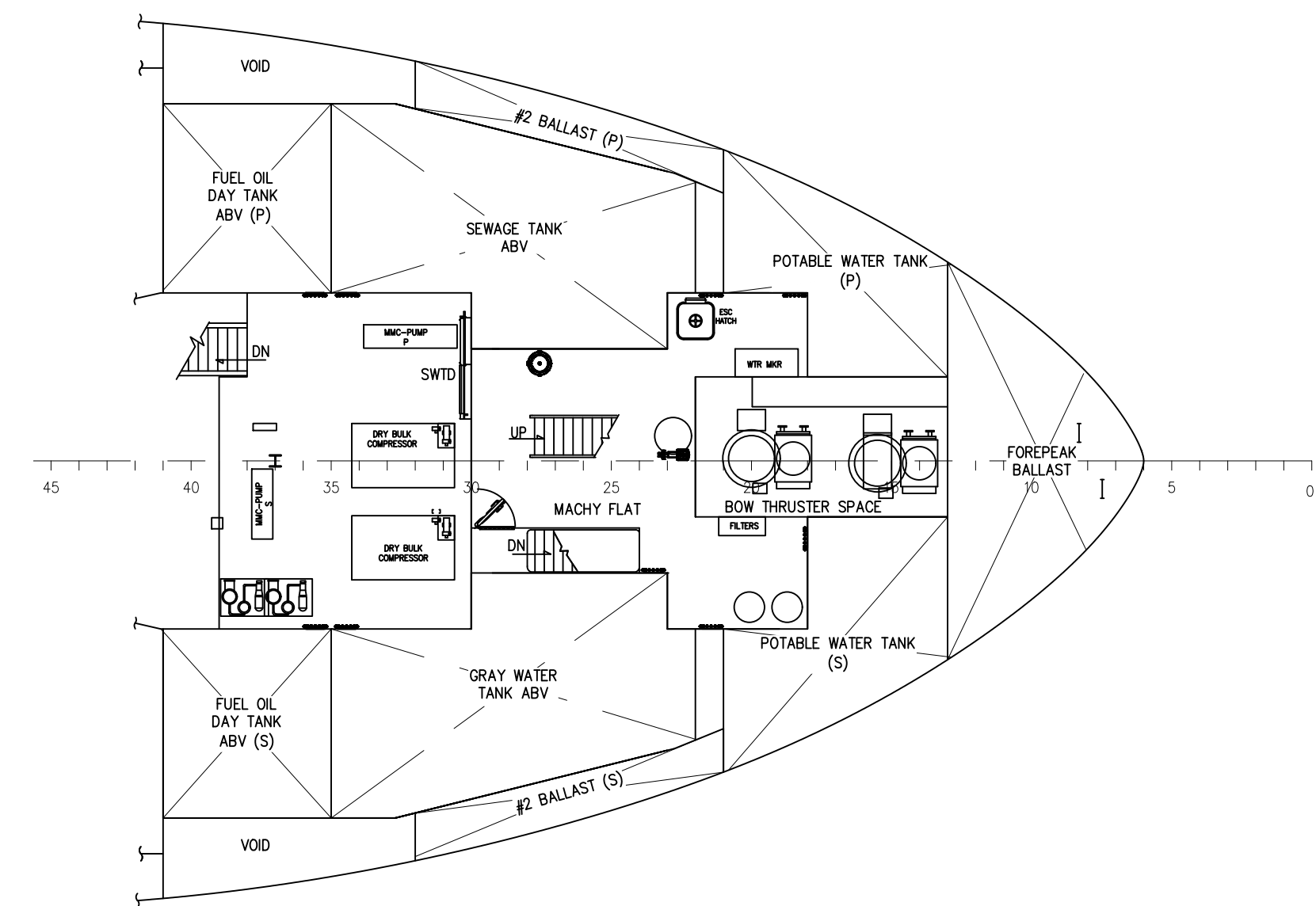
 <p>HORNBECK OFFSHORE SERVICES</p>	<p>OUTBOARD PROFILE & GENERAL ARRANGEMENT</p>		<p>SIZE D</p>
	<p>TASK No. 7681</p> <p>HULL No. 201</p>	<p>DRAWING No. 1.001</p> <p>SY: ESG</p>	<p>SCALE: 3/32" = 1'-0"</p> <p>DATE: 08/05/14</p> <p>SHEET 2 OF 4</p>

D

D

C

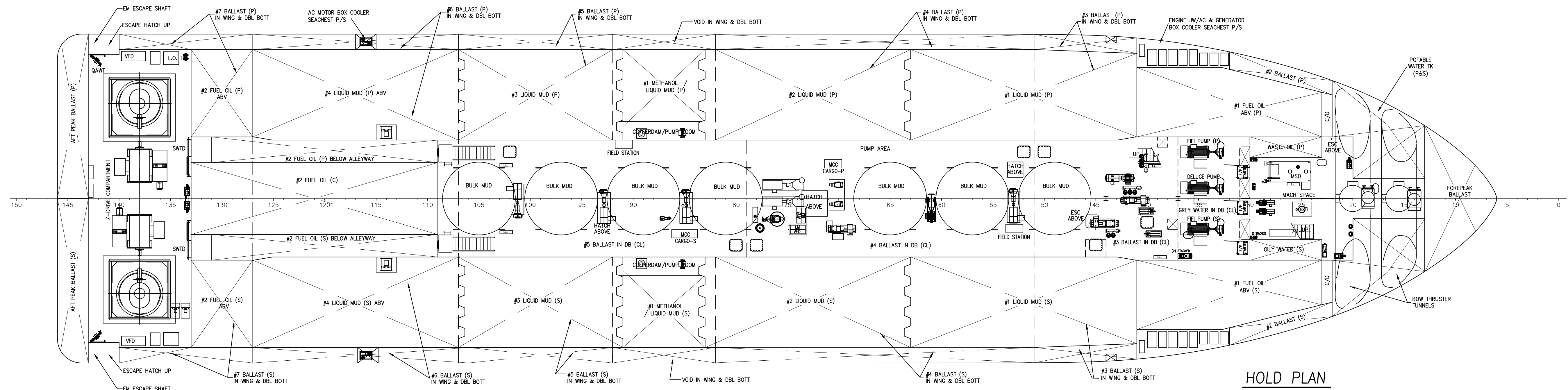
C



MEZZANINE FLAT

B

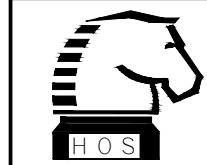
B

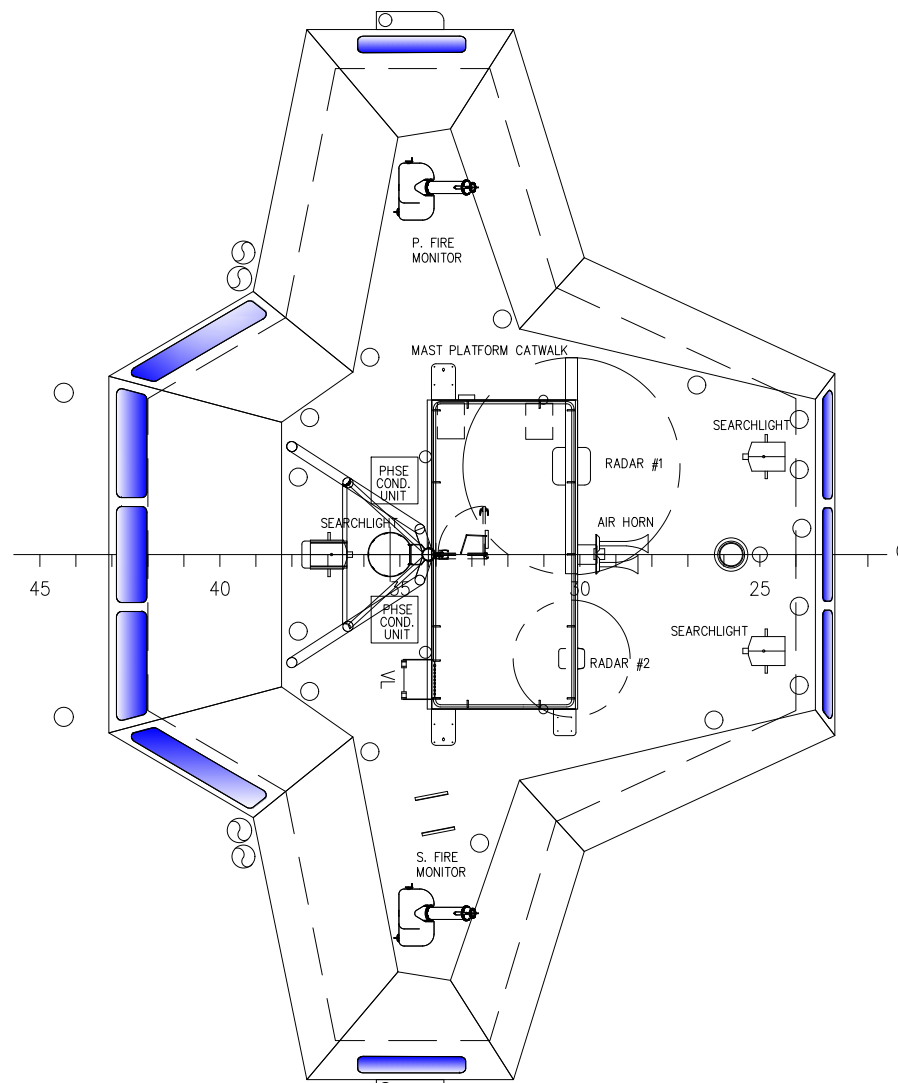


HOLD PLAN

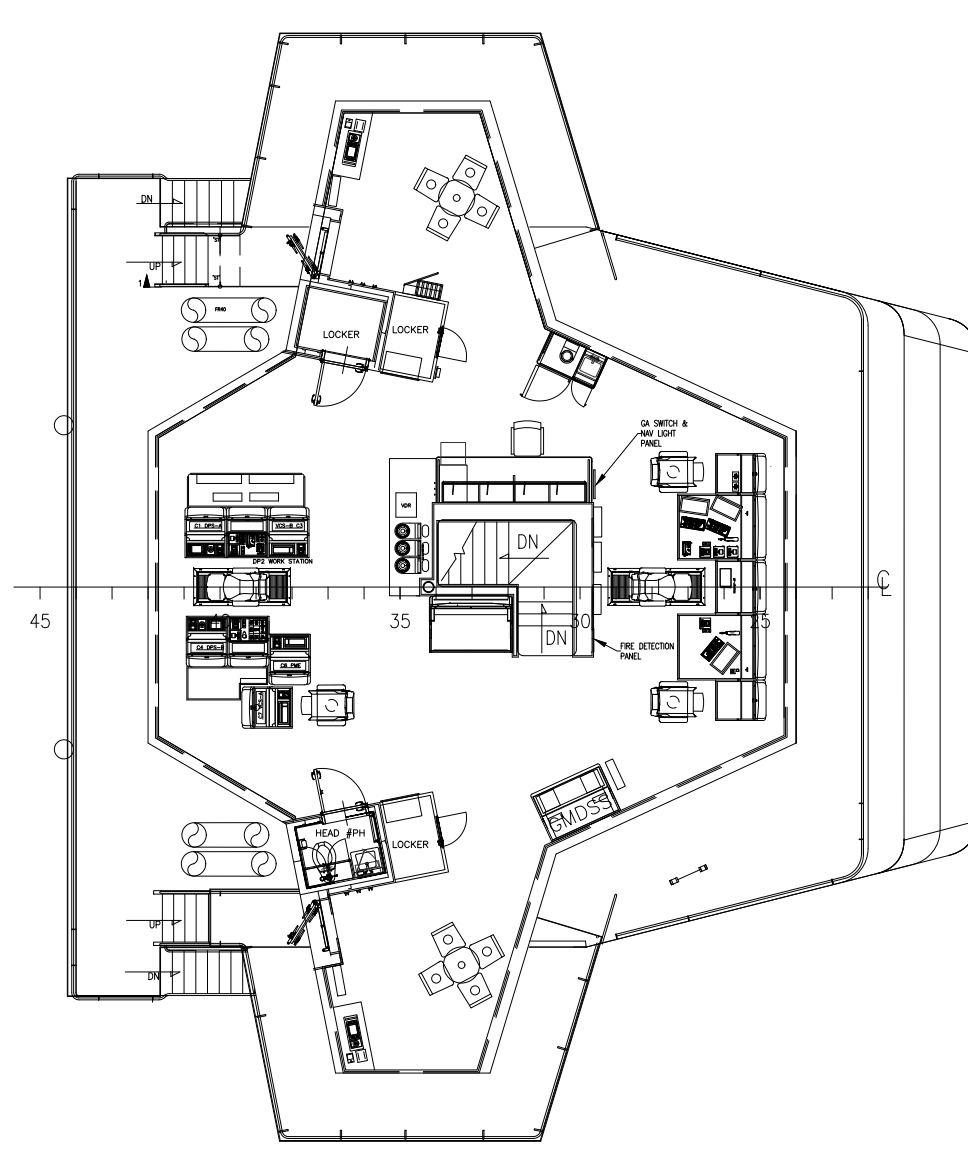
A

A

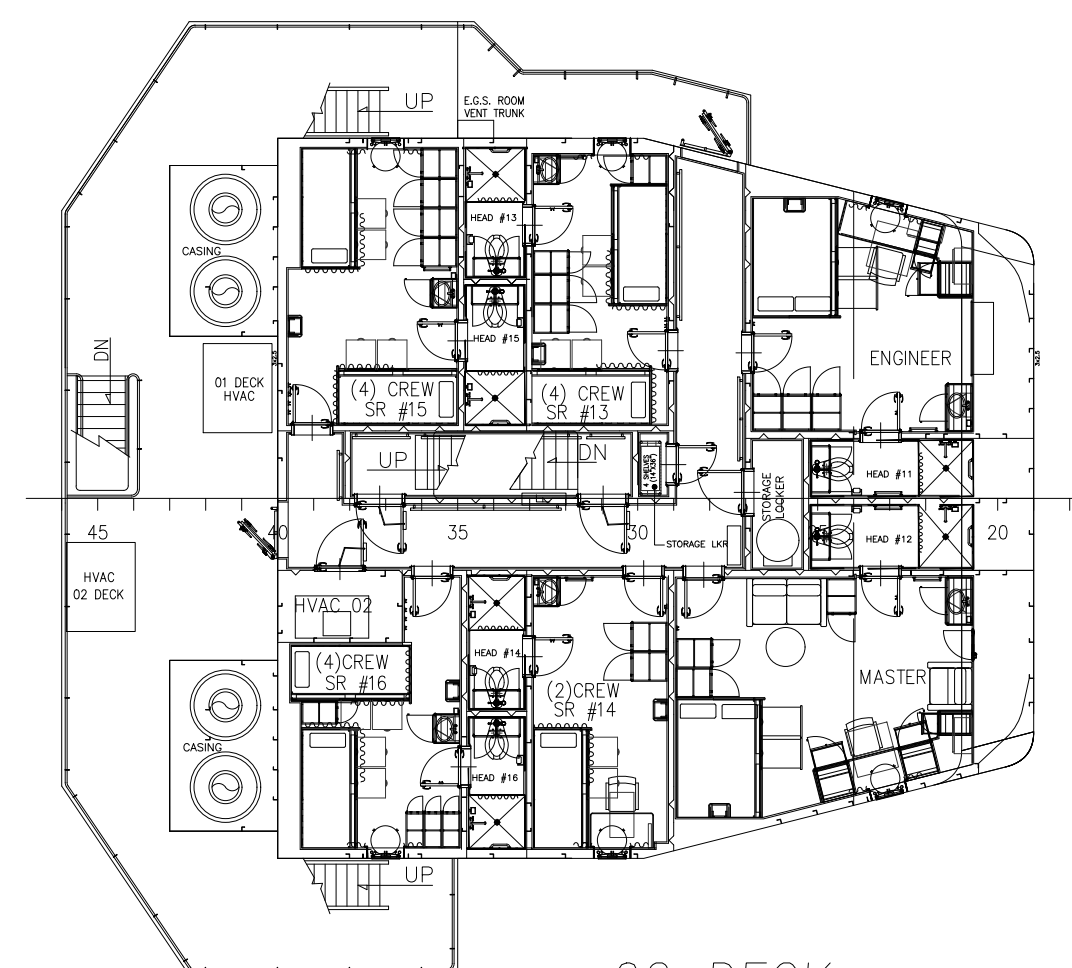
 <p>THIS DRAWING, DESIGN CONCEPT AND SPECIFICATIONS ARE THE PROPERTY OF HORNBECK OFFSHORE SERVICES AND ARE FURNISHED ON A CONFIDENTIAL BASIS WITH AN EXPRESSED UNDERSTANDING THAT THEY WILL NOT BE COPIED IN ANY MANNER USED FOR MANUFACTURE, SALE, TRANSFER, NOR USED TO THE DETRIMENT OF SAID FIRM WITHOUT WRITTEN PERMISSION.</p> <p>HORNBECK OFFSHORE SERVICES</p>	<p>OUTBOARD PROFILE & GENERAL ARRANGEMENT</p>		<p>SIZE D</p>	
	<p>TASK No. 7681</p>	<p>DRAWING No. 1.001</p>	<p>SCALE: 3/32" = 1'-0"</p>	<p>REV. 5</p>
	<p>HULL No. 201</p>	<p>SY: ESG</p>	<p>DATE: 08/05/14</p>	<p>SHEET 3 OF 4</p>
	<p>REV. 5</p>			



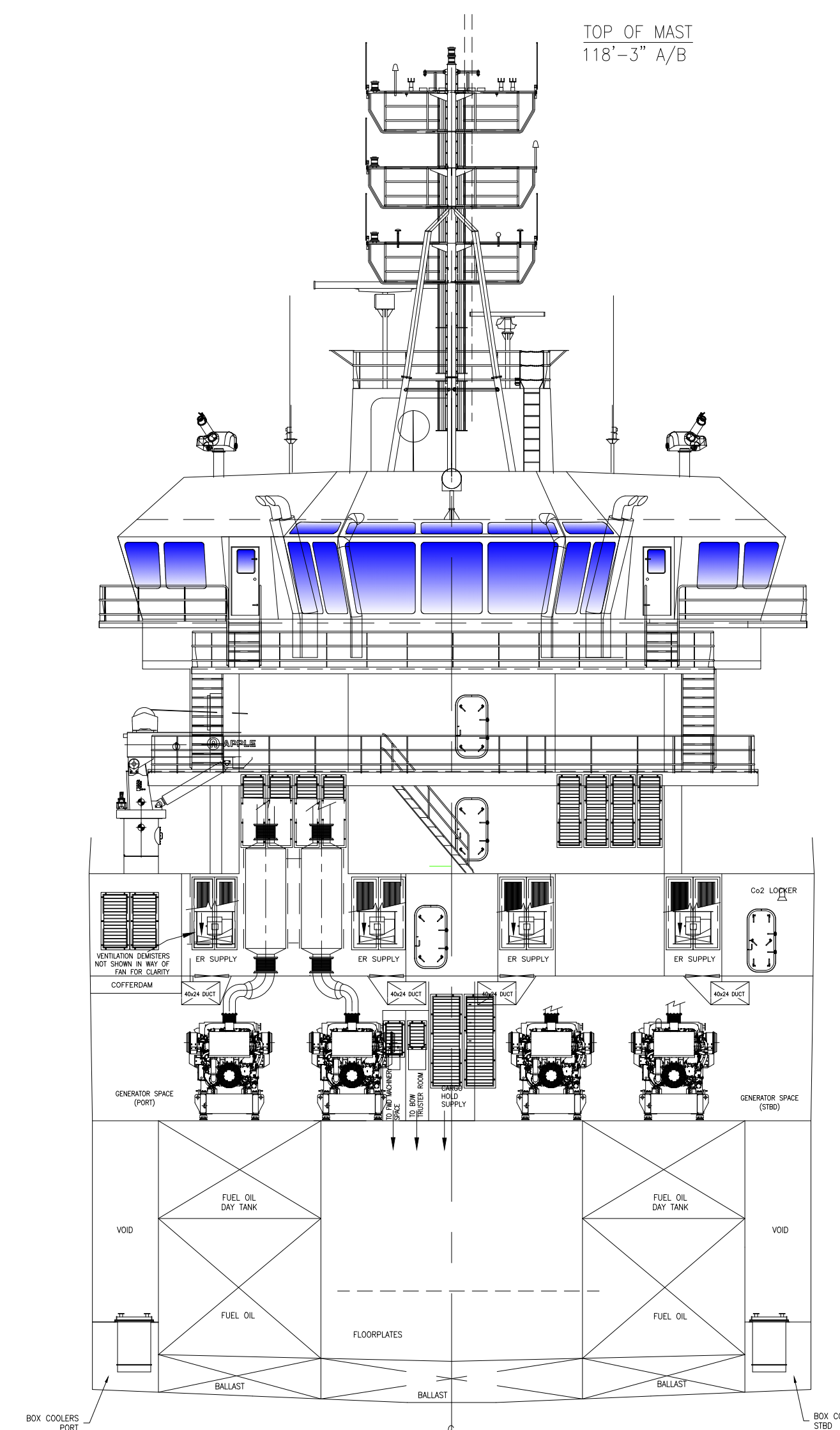
PILOT HOUSE TOP DECK



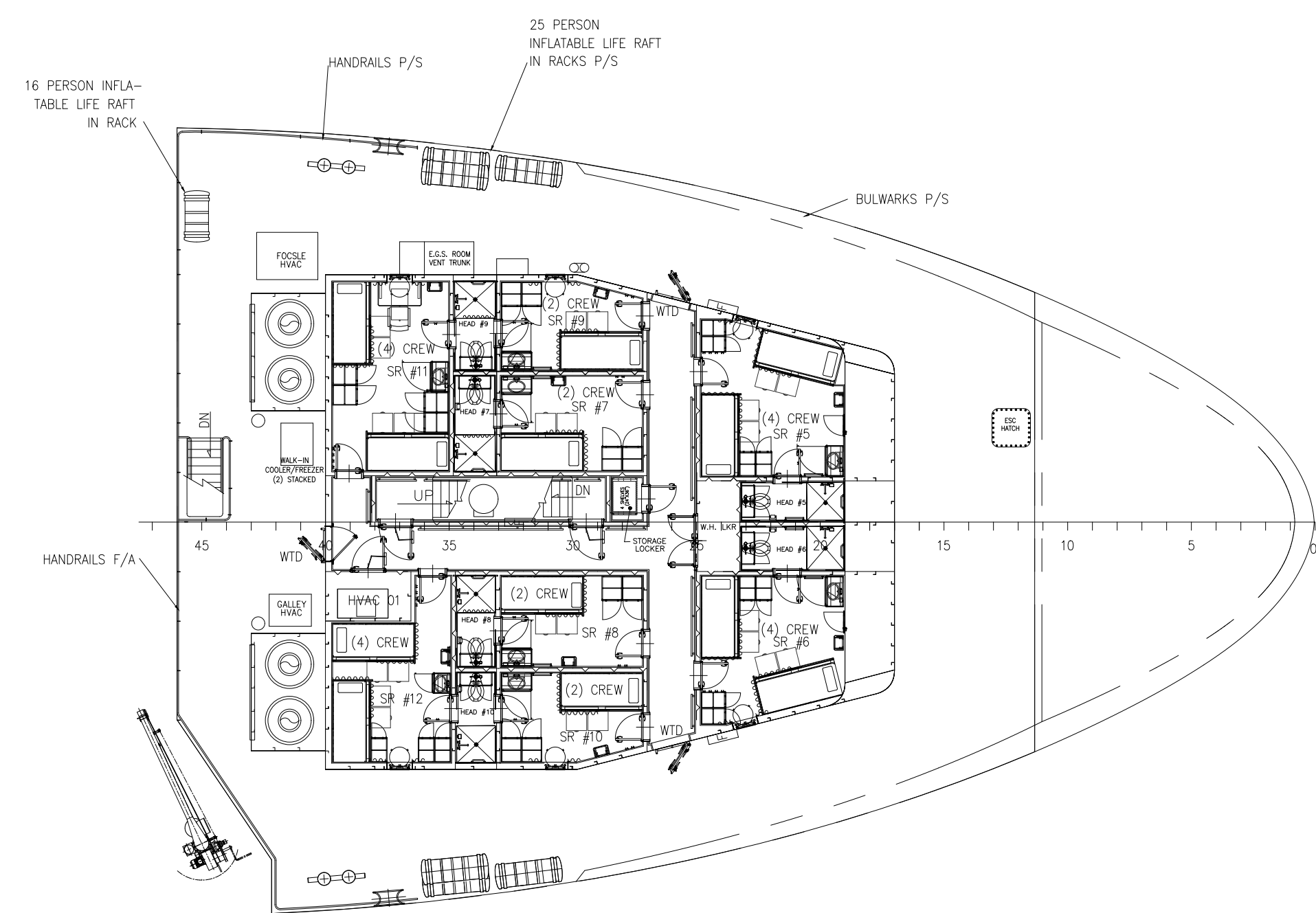
BRIDGE DECK



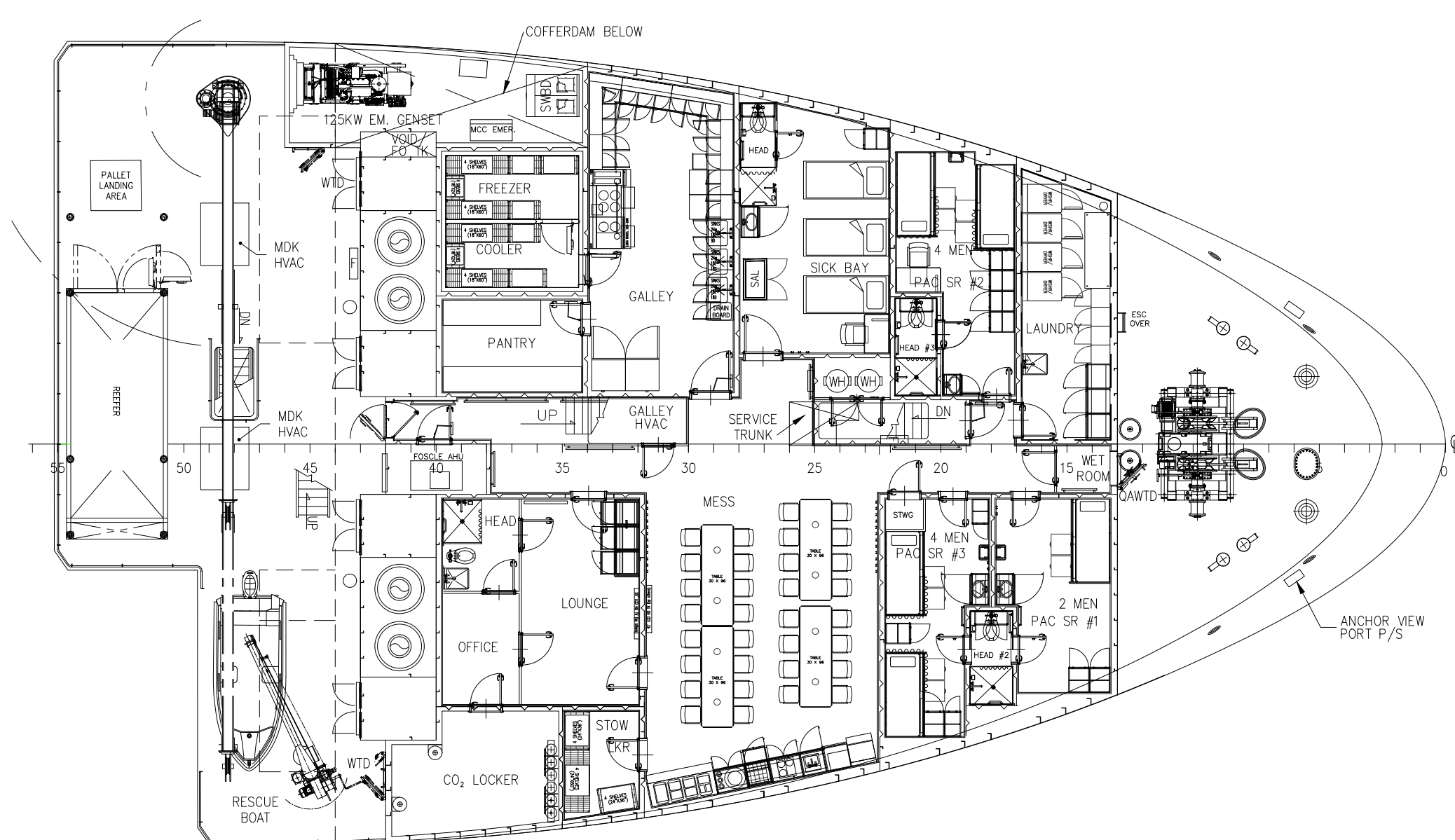
02 DECK
16 BERTHS



SECTION ABOUT FR41
LKG FWD



01 DECK
24 BERTHS



FOSCLE DECK
10 BERTHS (PAC)
3 BERTH (SICK BAY)

	THIS DRAWING, DESIGN CONCEPT AND SPECIFICATIONS ARE THE PROPERTY OF HORNBECK OFFSHORE SERVICES AND ARE FURNISHED ON A CONFIDENTIAL BASIS WITH AN EXPRESSED UNDERSTANDING THAT THEY WILL NOT BE COPIED IN ANY MANNER USED FOR MANUFACTURE, SALE, TRANSPORT, NOR USED TO THE DETRIMENT OF SAID FIRM WITHOUT WRITTEN PERMISSION.			HOS
	OUTBOARD PROFILE & GENERAL ARRANGEMENT			
	TASK No. 7681 HULL No. 201	DRAWING No. 1.001 SY: ESG	SCALE: 3/32" = 1'-0" DATE: 08/05/14 SHEET 4 OF 4	
HORNBECK OFFSHORE SERVICES			SIZE D REV. 5	