

**GENERAL NOTES**

1. THE VESSEL SHALL BE DESIGNED AND CONSTRUCTED IN FULL COMPLIANCE WITH THE 2011 AMERICAN BUREAU OF SHIPPING (ABS) RULES FOR BUILDING AND CLASSING STEEL VESSELS UNDER 90 METERS LENGTH. THE VESSEL SHALL RECEIVE CLASSIFICATION SYMBOLS: ABS, \*A1, \*AMS, \*ACCU, \*DPS-2 NOTATION, \*A1 FFV CLASS 1, OFFSHORE SUPPORT VESSEL, OSR-C2, ©, CRC.

THE FOLLOWING ARE THE PRINCIPLE CHARACTERISTICS:

REGULATORY LENGTH 294 FEET  
 BEAM 64 FEET  
 DEPTH 24 FEET 6 INCHES  
 ADMESUREMENT ITC GRT 3835

NO BERTHS 26 (INCLUDES 2 PERSON HOSPITAL)

2. THE VESSEL SHALL ALSO COMPLY WITH THE U.S. COAST GUARD REGULATIONS, SUBCHAPTER L, OFFSHORE SUPPLY VESSELS, WITH SUBCHAPTER S STABILITY REQUIREMENTS FOR CARRYING MORE THAN 16 OFFSHORE WORKERS, AND SUBCHAPTER I, MISCELLANEOUS CARGO VESSELS PER NVIC 2-95 ACP. CERTIFICATION SHALL BE PROVIDED FOR INTERNATIONAL VOYAGE, UNRESTRICTED SERVICE.

3. THE VESSEL SHALL COMPLY WITH FULL CURRENT SOLAS AND MARPOL REGULATIONS AS MAY APPLY, WITHOUT EXCEPTIONS. GMDSS AREA A-3 REQUIREMENTS SHALL APPLY.

TOP OF MAST  
 105'-6 11/16" ABL

PILOT HOUSE ROOF\*  
 65'-3" ABL

PILOT DECK\*  
 56'-3" ABL

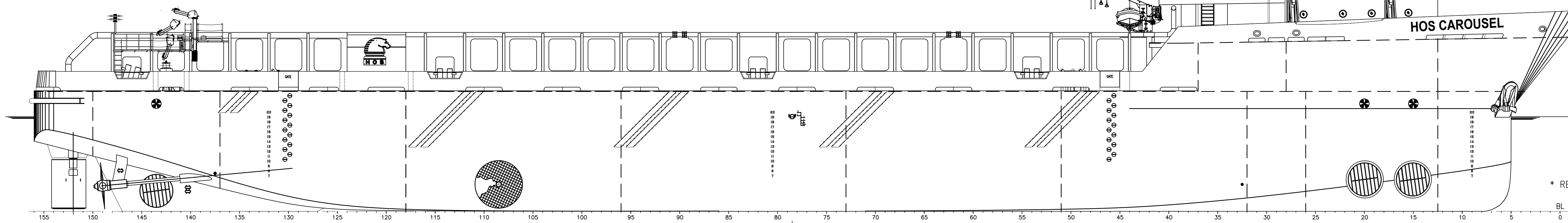
03 DECK\*  
 52'-3" ABL

02-DECK\*  
 43'-5" ABL

FOCSLE DECK\*  
 34'-5" ABL

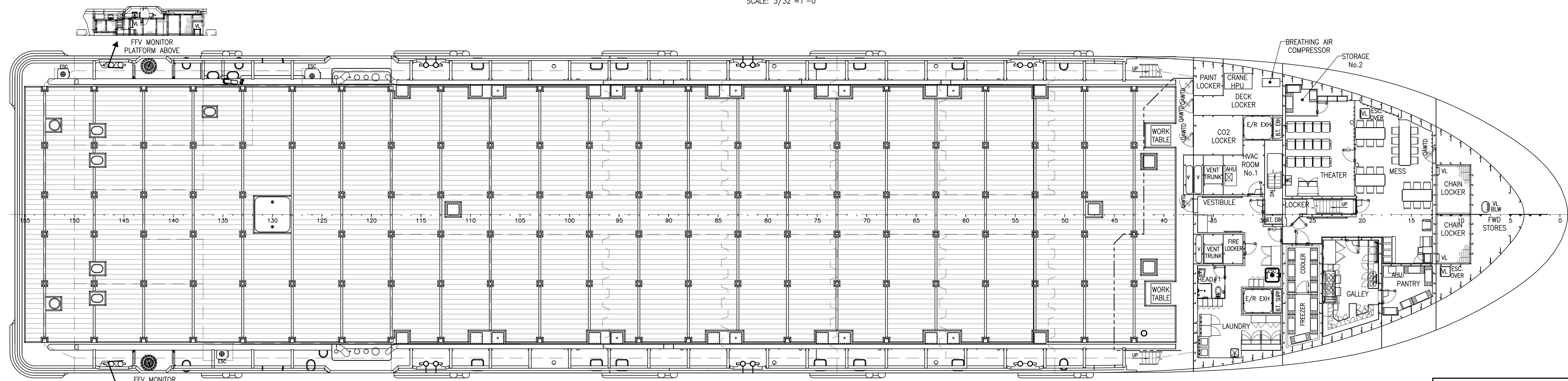
MAIN DECK  
 24'-6" ABL

\* REFERENCE HEIGHT AT FRAME 37



**OUTBOARD PROFILE**

SCALE: 3/32"=1'-0"



**MAIN DECK**

SCALE: 3/32"=1'-0"

**HOSMAX 320 / HOS CAROUSEL**

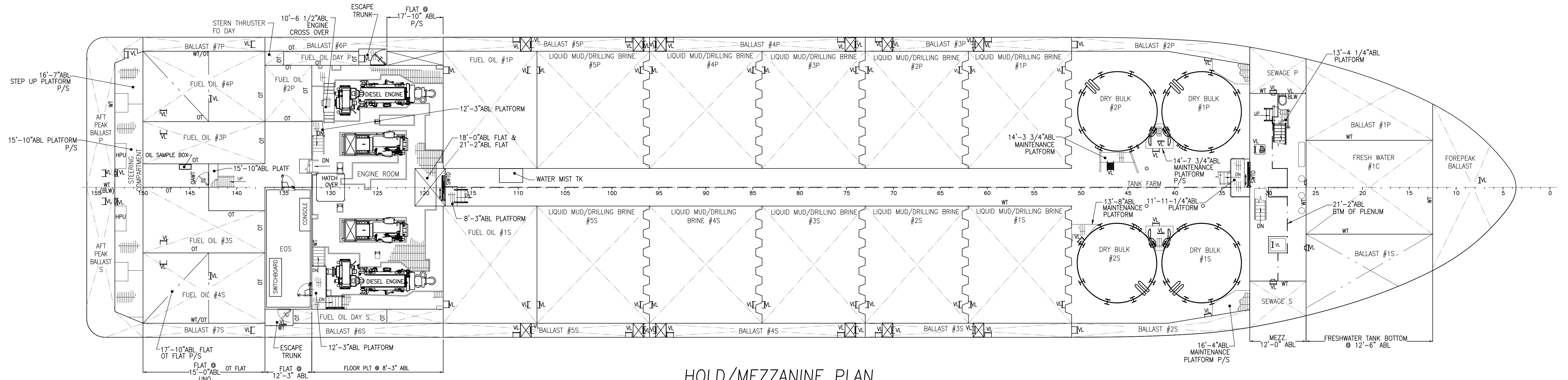
THIS DRAWING, DESIGN CONCEPT AND SPECIFICATIONS ARE THE PROPERTY OF HORNBECK OFFSHORE SERVICES AND ARE FURNISHED ON A CONFIDENTIAL BASIS WITH AN EXPRESSED UNDERSTANDING THAT THEY WILL NOT BE COPIED IN ANY MANNER USED FOR MANUFACTURE, SOLD, TRANSFERRED, NOR USED TO THE DETRIMENT OF SAID FIRM WITHOUT WRITTEN PERMISSION.

DRAWN BY: A. RHODA  
 319'-6" X 64' X 24'-6"

CHECKED BY: M. STANSBURY  
**OUTBOARD PROFILE & GENERAL ARRANGEMENTS**

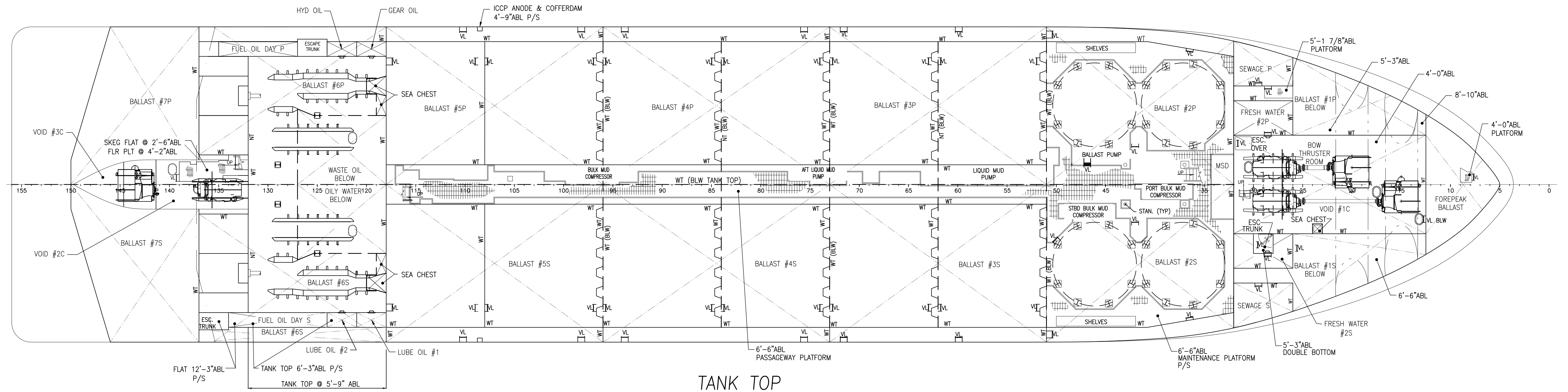
APPROVED BY: P. LUBRANO  
 TASK No. 7868  
 DRAWING No. 1.001  
 SCALE: AS NOTED  
 DATE: 11/04/15  
 SHEET 1 OF 3

LAST SAVE/PRINT: 6/8/2023 1:25 PM  
 ENG: JSULLIVA  
 SHEET: ANSI D 22X34



**HOLD/MEZZANINE PLAN**

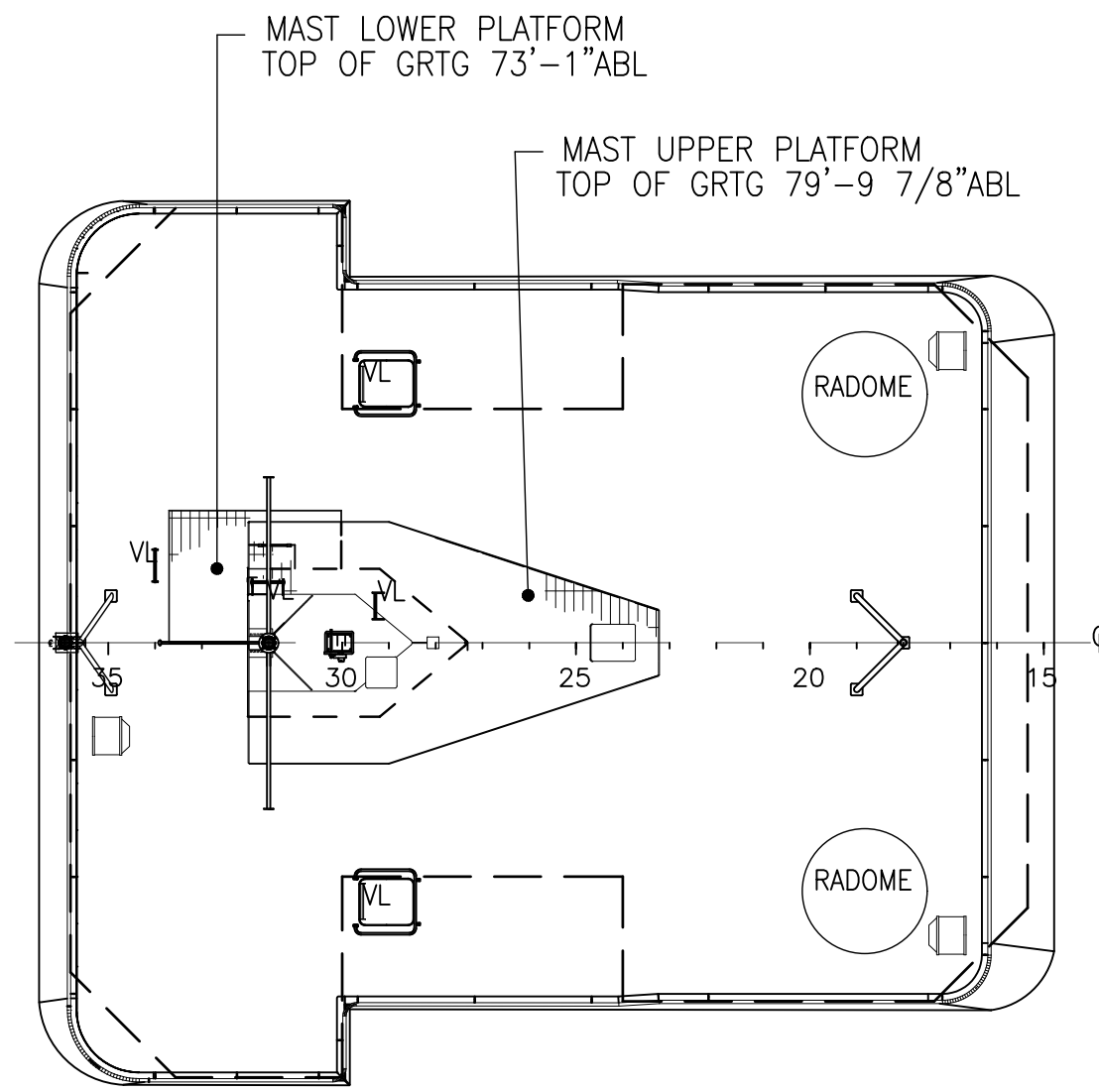
SCALE: 3/32"=1'-0"



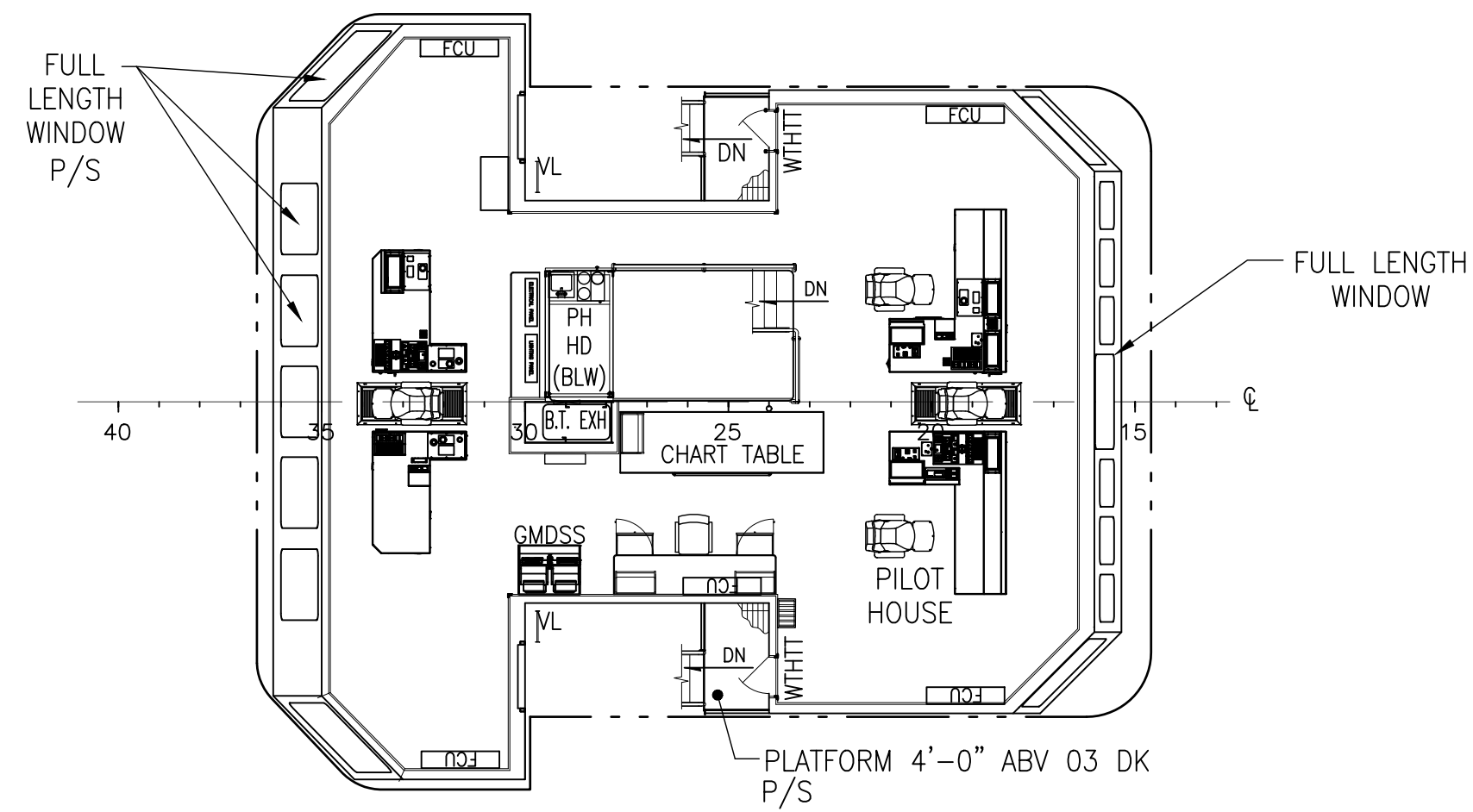
**TANK TOP**

SCALE: 3/32"=1'-0"

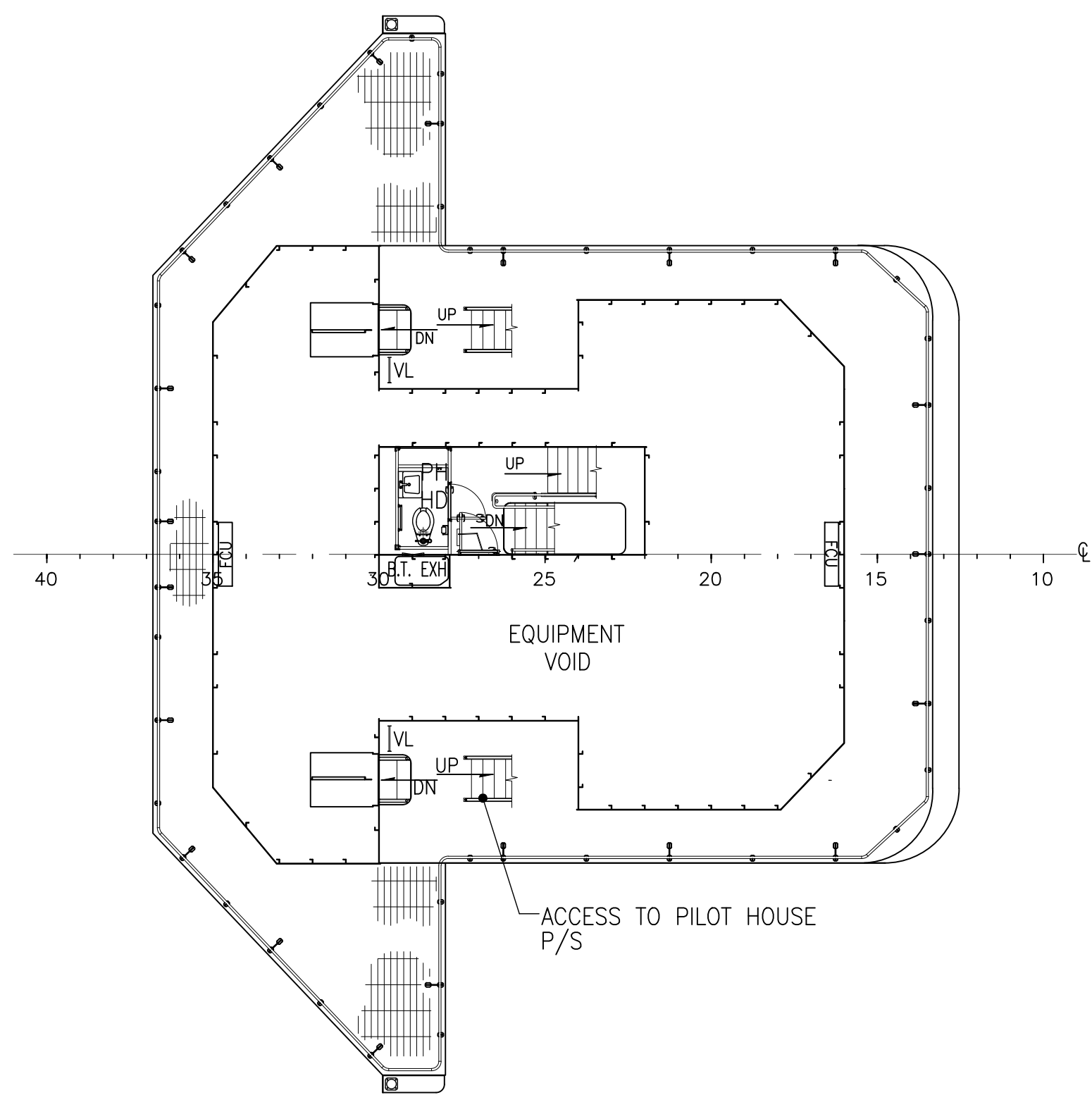
<p>HORNBECK OFFSHORE SERVICES</p>	<p>THIS DRAWING, DESIGN CONCEPT AND SPECIFICATIONS ARE THE PROPERTY OF HORNBECK OFFSHORE SERVICES AND ARE FURNISHED ON A CONFIDENTIAL BASIS WITH AN EXPRESSED UNDERSTANDING THAT THEY WILL NOT BE COPIED IN ANY MANNER USED FOR MANUFACTURING, SOLD, TRANSFERRED, NOR USED TO THE DETRIMENT OF SAID FIRM WITHOUT WRITTEN PERMISSION.</p>		<p><b>OUTBOARD PROFILE &amp; GENERAL ARRANGEMENTS</b></p>	<p>SIZE D</p>
	<p>TASK No. 7868</p>	<p>DRAWING No. 1.001</p>	<p>SCALE: AS NOTED DATE: 11/04/15</p>	<p>REV. 2</p>
	<p>HULL No. 2016</p>	<p>SY: VTHM</p>	<p>SHEET 2 OF 3</p>	



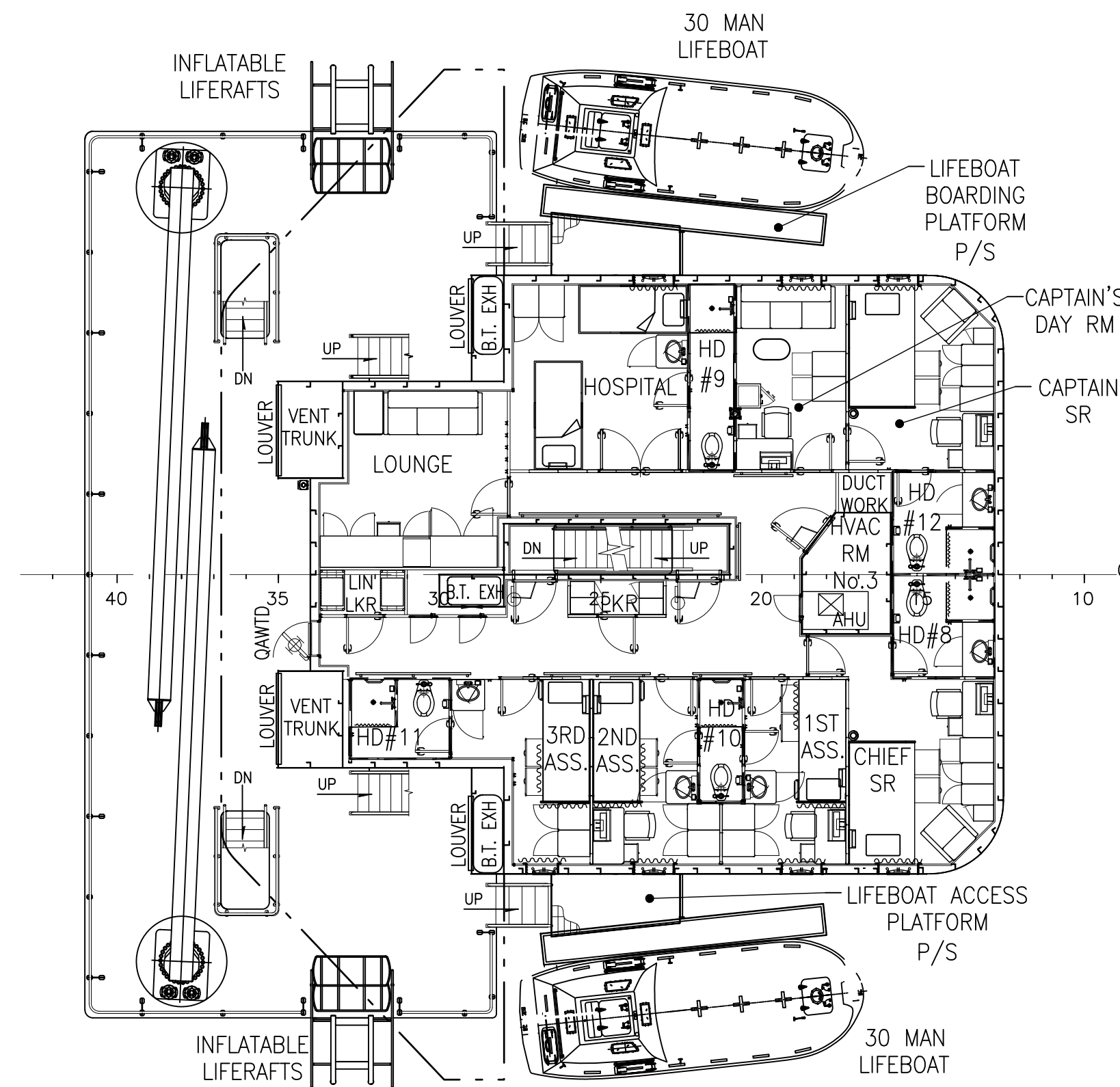
**PILOT HOUSE TOP**  
SCALE: 1/8"=1'-0"



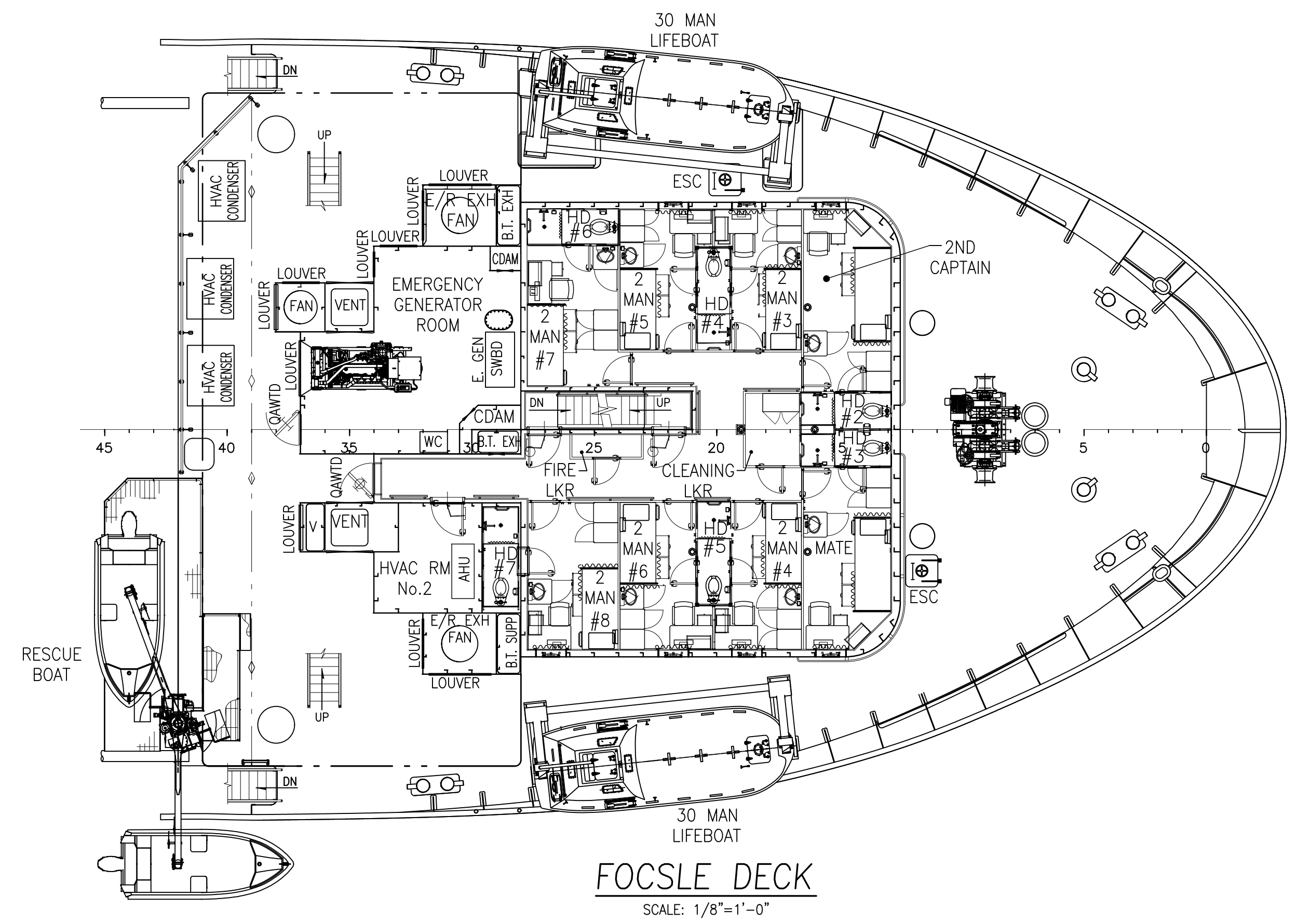
**PILOT HOUSE DECK**  
SCALE: 1/8"=1'-0"



**03 DECK**  
SCALE: 1/8"=1'-0"



**02 DECK**  
SCALE: 1/8"=1'-0"



**FOCSLE DECK**  
SCALE: 1/8"=1'-0"