



HOS  
SUPPLY  
VESSEL FLEET

HORNBECK OFFSHORE®

DP-2 OSVs

THE HOS FLEET OF JONES ACT COMPLIANT, DP-2 SUPPLY VESSELS ARE AMONG THE LARGEST IN THE WORLD WITH DEADWEIGHT CAPACITIES RANGING FROM 2,800 t TO 8,000 t.

- SIGNIFICANT CARGO CAPACITIES
- MULTIPLE TANK SEGREGATIONS
- REDUNDANT PUMPING SOLUTIONS
- FLAMMABLE/HAZARDOUS PRODUCT TANKS
- CARGO TRANSPORT, ACCOMMODATION SUPPORT, AND OTHER SPECIALTY SERVICES

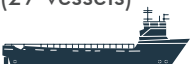



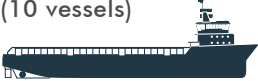

# HOS SUPPLY VESSELS



# MUD CAPACITIES BY VESSEL CLASS

## LEGEND

	Est. 16# Liquid Mud Capacity
	Total Liquid Mud Volume

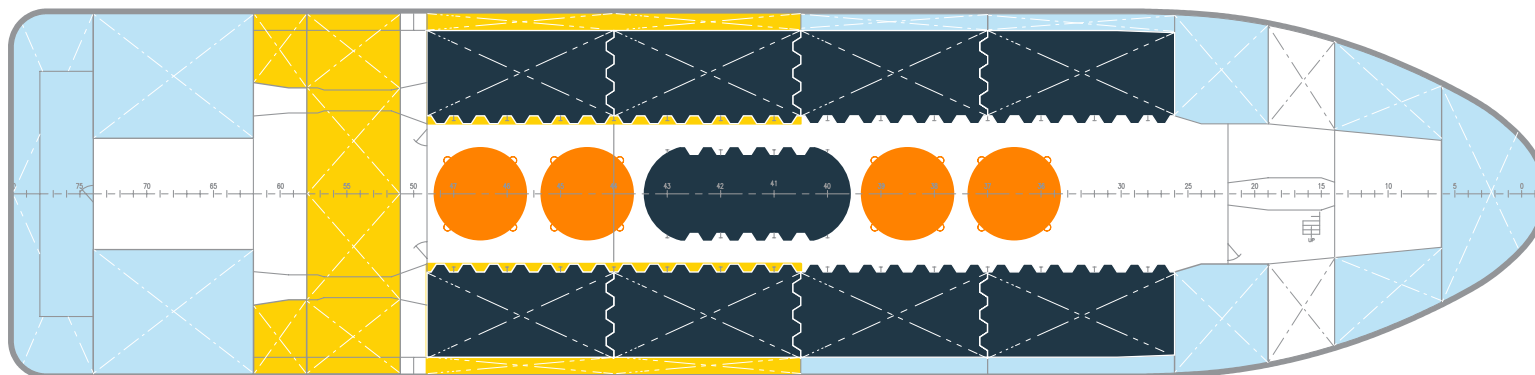
CLASS	DEADWEIGHT	LIQUID PRODUCT CAPACITY	
<b>HOS 240</b> (27 vessels) 	2,800 t	16# MUD	7,400 bbl (1,180 m <sup>3</sup> )
		TOTAL VOLUME	8,300 bbl (1,315 m <sup>3</sup> )
<b>HOS 265</b> (4 vessels) 	3,700 t	16# MUD	9,300 bbl (1,480 m <sup>3</sup> )
		TOTAL VOLUME	10,350 bbl (1,645 m <sup>3</sup> )
<b>HOSMAX 300</b> (3 vessels) 	5,500 t	16# MUD	17,100 bbl (2,715 m <sup>3</sup> )
		TOTAL VOLUME	20,850 bbl (3,315 m <sup>3</sup> )
<b>HOSMAX 310</b> (5 vessels) 	6,200 t	16# MUD	19,300 bbl (3,065 m <sup>3</sup> )
		TOTAL VOLUME	21,400 bbl (3,405 m <sup>3</sup> )
<b>HOSMAX 320</b> (10 vessels) 	6,200 t	16# MUD	18,700 bbl (2,980 m <sup>3</sup> )
		TOTAL VOLUME	20,900 bbl (3,325 m <sup>3</sup> )
<b>HOSMPSV 370</b> (2 vessels) 	8,000 t	16# MUD	24,100 bbl (3,830 m <sup>3</sup> )
		TOTAL VOLUME	31,000 bbl (4,920 m <sup>3</sup> )

\* Estimated 16# liquid mud capacity assumes a 10-day supply of vessel fuel (2 days steaming, 8 days on DP), 90% tank innage, and backload of saltwater ballast into vessel's ballast tanks upon discharge of cargo. Detailed loading assumptions can be provided upon request.

NOTICE: The information contained herein is provided for the convenience of reference, and Hornbeck does not warrant the accuracy or completeness of the data, which may vary from the current condition of the vessel or equipment. Hornbeck accepts no liability for the content of this document or the consequences of any actions taken on the basis of the information provided, unless that information is subsequently confirmed in writing by an authorized representative.



# HOS 240



## FEATURES

- 2,800 t Deadweight
- 7,900 ft<sup>2</sup> Deck Area
- DP-2 Station Keeping
- 16 - 24 Berths
- **HIGHLIGHTED VESSEL**  
HOS Silver Arrow:  
36" Moonpool; Berthing  
for 24 People

## LIQUID MUD

LIQUID MUD		
	U.S.	METRIC
TANK VOLUME (100%)	8,270 bbl	1,315 m <sup>3</sup>
SEGREGATIONS	Two (2)	
PUMPING RATES*	2 x 407 GPM	2 x 93 m <sup>3</sup> /hr

\* Pumps can run in tandem to maximize transfer rates up to 800 GPM.

## DRY BULK

DRY BULK		
	U.S.	METRIC
TANK VOLUME (100%)	6,240 ft <sup>3</sup>	180 m <sup>3</sup>
SEGREGATIONS	Two (2)	
PUMPING RATES	80 psi	5.5 bar

## FUEL OIL

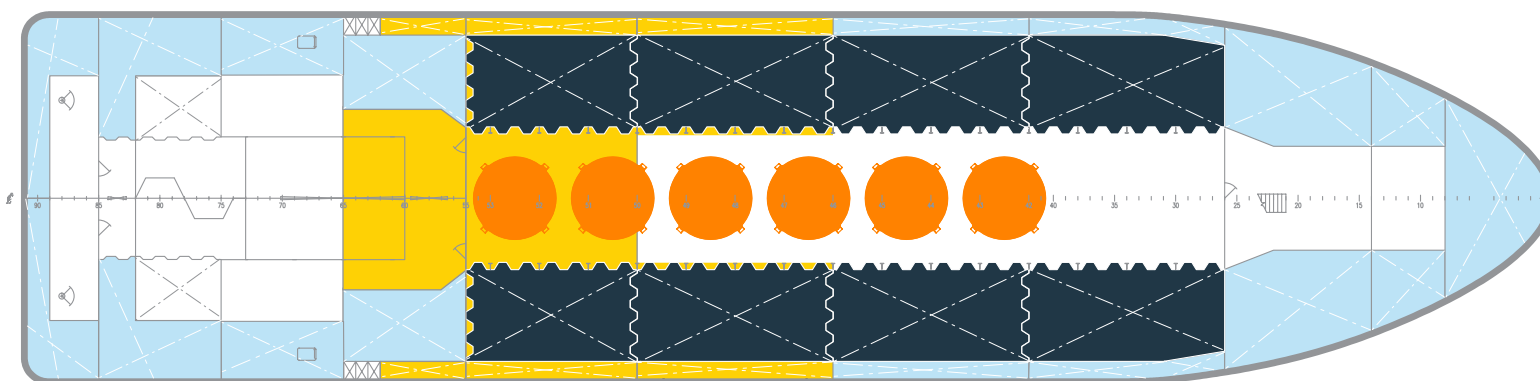
FUEL OIL		
	U.S.	METRIC
TANK VOLUME (100%)	107,700 gal	400 m <sup>3</sup>
PUMPING RATES	1 at 550 GPM	1 at 125 m <sup>3</sup> /hr

## RIG WATER

RIG WATER		
	U.S.	METRIC
TANK VOLUME (100%)	317,600 gal	1,200 m <sup>3</sup>
PUMPING RATES	1 at 550 GPM	1 at 125 m <sup>3</sup> /hr



# HOS 265



## FEATURES

- 3,700 t Deadweight
- 8,700 ft<sup>2</sup> Deck Area
- DP-2 Station Keeping
- 24 - 56 Berths
- HIGHLIGHTED VESSEL**  
HOS Ridgewind:  
100 t Active Heave  
Compensated Crane;  
Berthing for 56 People

## LIQUID MUD

LIQUID MUD		
	U.S.	METRIC
TANK VOLUME (100%)	10,350 bbl	1,645 m <sup>3</sup>
SEGREGATIONS	Two (2)	
PUMPING RATES	2 x 407 GPM	2 x 93 m <sup>3</sup> /hr

\* Pumps can run in tandem to maximize transfer rates up to 800 GPM.

## DRY BULK

DRY BULK		
	U.S.	METRIC
TANK VOLUME (100%)	10,200 ft <sup>3</sup>	290 m <sup>3</sup>
SEGREGATIONS	Two (2)	
PUMPING RATES	80 psi	5.5 bar

## FUEL OIL

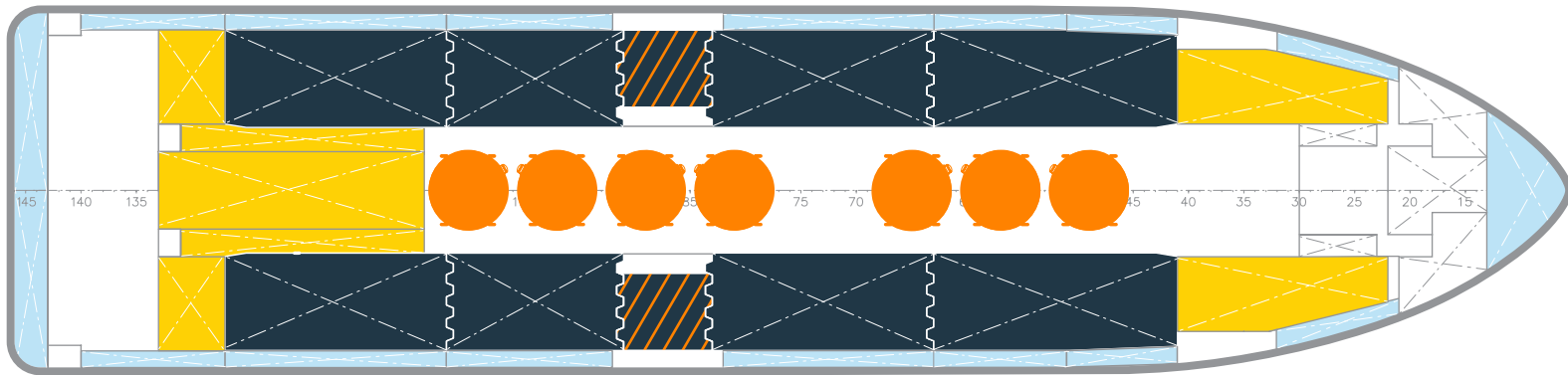
FUEL OIL		
	U.S.	METRIC
TANK VOLUME (100%)	146,000 gal	553 m <sup>3</sup>
PUMPING RATES	1 at 550 GPM	1 at 125 m <sup>3</sup> /hr

## RIG WATER

RIG WATER		
	U.S.	METRIC
TANK VOLUME (100%)	392,700 gal	1,500 m <sup>3</sup>
PUMPING RATES	1 at 550 GPM	1 at 125 m <sup>3</sup> /hr



# HOSMAX 300



## FEATURES

- 5,500 t Deadweight
- DP-2 Station Keeping
- 50 Berths
- 10,800 ft<sup>2</sup> Deck Area
- FFV-1
- Oil Spill Recovery (OSR-C2)
- **HIGHLIGHTED VESSEL**  
HOS Red Rock:  
ROV Ready

## LIQUID MUD

	LIQUID MUD		HAZARDOUS*	
	U.S.	METRIC	U.S.	METRIC
TANK VOLUME (100%)	20,850 bbl	3,315 m <sup>3</sup>	1,600 bbl	255 m <sup>3</sup>
SEGREGATIONS	Two (2)		One (1)	
PUMPING RATES	2 x 1,000 GPM	2 x 227 m <sup>3</sup> /hr	2 at 250 GPM	2 at 57 m <sup>3</sup> /hr

\* HAZARDOUS TANKS can carry methanol, flammable rated liquids, and recovered oil <60°C FP.

LIQUID MUD TANKS can carry recovered oil >60°C FP (OSR-C2).

## DRY BULK

	DRY BULK	
	U.S.	METRIC
TANK VOLUME (100%)	14,350 ft <sup>3</sup>	400 m <sup>3</sup>
SEGREGATIONS	Two (2)	
PUMPING RATES	80 psi	5.5 bar

## FUEL OIL

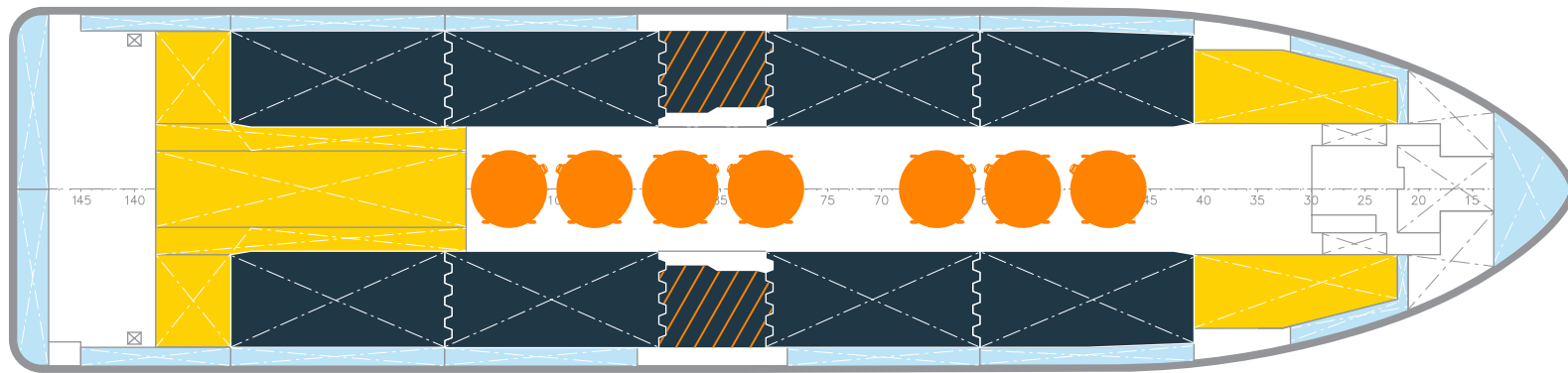
	FUEL OIL	
	U.S.	METRIC
TANK VOLUME (100%)	220,170 gal	830 m <sup>3</sup>
PUMPING RATES	2 at 750 GPM	2 at 170 m <sup>3</sup> /hr

## RIG WATER

	RIG WATER	
	U.S.	METRIC
TANK VOLUME (100%)	498,500 gal	1,900 m <sup>3</sup>
PUMPING RATES	2 at 750 GPM	2 at 170 m <sup>3</sup> /hr



# HOSMAX 310



## FEATURES

- 6,200 t Deadweight
- DP-2 Station Keeping
- 50 - 130 Berths
- 11,140 ft<sup>2</sup> Deck Area
- FFV-1
- Oil Spill Recovery (OSR-C2)
- HIGHLIGHTED VESSEL**  
HOS Briarwood:  
Helideck; 130 Berths; ROV Ready; Mezzanine Deck; Continuous Agitation of Mud with In-Tank, Low Inertia Paddle Mixers

## LIQUID MUD

	LIQUID MUD		HAZARDOUS*	
	U.S.	METRIC	U.S.	METRIC
TANK VOLUME (100%)	21,400 bbl	3,405 m <sup>3</sup>	2,200 bbl	350 m <sup>3</sup>
SEGREGATIONS	Two (2)		One (1)	
PUMPING RATES	2 x 1,000 GPM	2 x 227 m <sup>3</sup> /hr	2 at 250 GPM	2 at 57 m <sup>3</sup> /hr

\* HAZARDOUS TANKS can carry methanol, flammable rated liquids, and recovered oil <60°C FP.

LIQUID MUD TANKS can carry recovered oil >60°C FP (OSR-C2).

## DRY BULK

	DRY BULK	
	U.S.	METRIC
TANK VOLUME (100%)	14,350 ft <sup>3</sup>	400 m <sup>3</sup>
SEGREGATIONS	Two (2)	
PUMPING RATES	80 psi	5.5 bar

## FUEL OIL

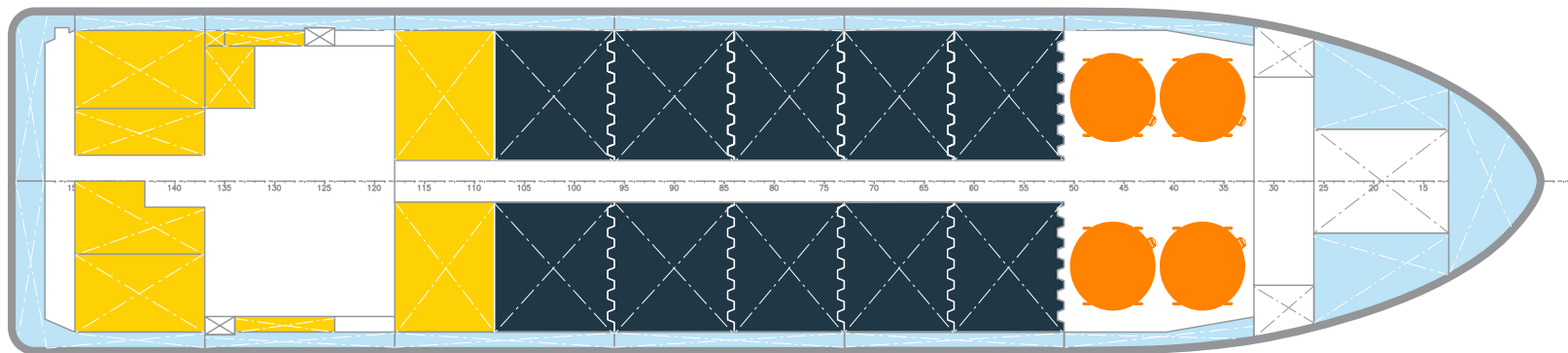
	FUEL OIL	
	U.S.	METRIC
TANK VOLUME (100%)	268,300 gal	1,000 m <sup>3</sup>
PUMPING RATES	2 at 750 GPM	2 at 170 m <sup>3</sup> /hr

## RIG WATER

	RIG WATER	
	U.S.	METRIC
TANK VOLUME (100%)	528,300 gal	2,000 m <sup>3</sup>
PUMPING RATES	2 at 750 GPM	2 at 170 m <sup>3</sup> /hr



# HOSMAX 320



## FEATURES

- 6,200 t Deadweight
- DP-2 Station Keeping
- 24 Berths
- 12,100 ft<sup>2</sup> Deck Area
- Fire Fighting (FFV-1)
- Oil Spill Recovery (OSR-C2)
- **HIGHLIGHTED VESSEL**  
HOS Claymore:  
Continuous Agitation of  
Mud with In-Tank, Low  
Inertia Paddle Mixers

## LIQUID MUD

LIQUID MUD		
	U.S.	METRIC
TANK VOLUME (100%)	20,900 bbl	3,325 m <sup>3</sup>
SEGREGATIONS	Three (3)	
PUMPING RATES	3 x 1,000 GPM	3 x 227 m <sup>3</sup> /hr

\* LIQUID MUD TANKS can carry recovered oil >60°C FP (OSR-C2).

## DRY BULK

DRY BULK		
	U.S.	METRIC
TANK VOLUME (100%)	14,300 ft <sup>3</sup>	400 m <sup>3</sup>
SEGREGATIONS	One (1)	
PUMPING RATES	80 psi	5.5 bar

## FUEL OIL

FUEL OIL		
	U.S.	METRIC
TANK VOLUME (100%)	241,800 gal	915 m <sup>3</sup>
PUMPING RATES	2 at 800 GPM	2 at 182 m <sup>3</sup> /hr

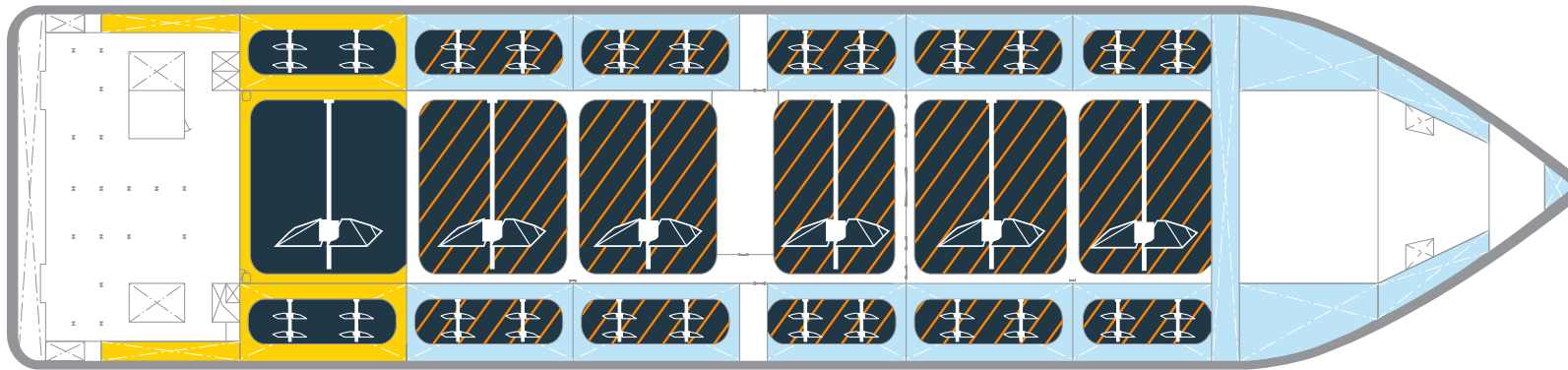
## RIG WATER

RIG WATER		
	U.S.	METRIC
TANK VOLUME (100%)	701,600 gal	2,700 m <sup>3</sup>
PUMPING RATES	2 at 732 GPM	2 at 166 m <sup>3</sup> /hr





# HOSMPSV 370



## FEATURES

- Largest DP-2 Supply Vessels in the World
- 8,000 t Deadweight
- 47 - 52 Berths
- 11,600 ft<sup>2</sup> Deck Area
- Oil Spill Recovery (OSR-C1)
- Low Inertia Paddle Mixers with Integrated Tank Cleaning System
- Certified as Supply & Industrial Vessels, Petroleum & Chemical Tankers

## LIQUID MUD

LIQUID MUD		
	U.S.	METRIC
TANK VOLUME (100%)	31,000 bbl	4,920 m <sup>3</sup>
SEGREGATIONS	Three (3)	
PUMPING RATES	3 x 1,000 GPM	3 x 227 m <sup>3</sup> /hr

## HAZARDOUS

HAZARDOUS*		
	U.S.	METRIC
TANK VOLUME (100%)	24,600 bbl	3,900 m <sup>3</sup>
SEGREGATIONS	Three (3)	
PUMPING RATES	3 x 1,000 GPM	3 x 227 m <sup>3</sup> /hr

\* HAZARDOUS TANKS can carry methanol, flammable rated liquids, and recovered oil <60°C FP (OSR-C1).

## FUEL OIL

FUEL OIL (I/L)		
	U.S.	METRIC
TANK VOLUME (100%)	36,400 bbl	5,800 m <sup>3</sup>
PUMPING RATES	2 at 1,000 GPM	2 at 227 m <sup>3</sup> /hr

## RIG WATER

RIG WATER		
	U.S.	METRIC
TANK VOLUME (100%)	31,900 gal	5,100 m <sup>3</sup>
PUMPING RATES	2 at 750 GPM	2 at 170 m <sup>3</sup> /hr



HOS 200 OSV



HOS 240 OSV



HOS 240 AHTS



HOS 250 OSV



HOS 265 OSV



HOS 285 OSV



HOSMAX 300 OSV



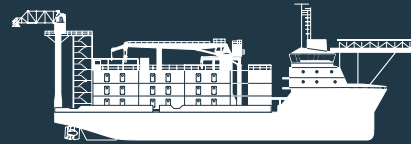
HOSMAX 310 OSV



HOSMAX 320 OSV



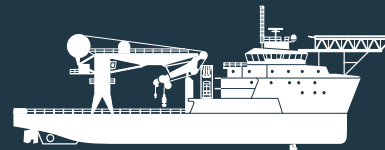
HOSMAX 310 EQH OSV



HOSMPSV FLOTEL



HOSMPSV 310



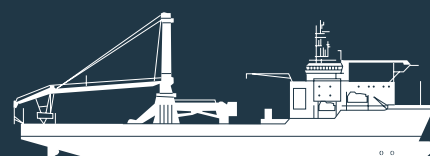
HOSMPSV 310 ES



HOSMPSV 370



HOSMPSV 400 ES



HOSMPSV 430



# INNOVATION AFLOAT



# THE HOS<sup>®</sup> FLEET:

Through a series of new building and conversion programs, Hornbeck Offshore has designed and developed a fleet of multi-class vessels. With each ensuing new build program, Hornbeck refined the previous blueprint to enhance size, capacity, safety, capability and comfort based on extensive customer input. Their new-generation, Offshore Service Vessels (OSVs) are equipped with the latest technologies, including advanced propulsion and cargo-handling systems, and incremental levels of dynamic positioning redundancy.

Hornbeck Offshore's new ultra-deepwater, Multi-Purpose Support Vessels (MPSVs) are substantially larger and more versatile than their OSVs, and are capable of meeting a variety of their customers' subsea, offshore accommodations and specialty needs anywhere in the world.





**HORNBECK OFFSHORE®**  
*Service with Energy®*

**CORPORATE HEADQUARTERS**  
Hornbeck Offshore Services, Inc.  
103 Northpark Boulevard  
Covington, Louisiana 70433  
USA

tel 985.727.2000 | fax 985.727.3606  
e-mail: [sales@hornbeckoffshore.com](mailto:sales@hornbeckoffshore.com)  
[www.hornbeckoffshore.com](http://www.hornbeckoffshore.com)